

A Vendor's Perspective on Genre/Form Terms and the LCGFT

Backstage LIBRARY WORKS

Karen Anderson
Authorities Librarian, Backstage Library Works

1

Backstage LIBRARY WORKS

Our Company – Provo, Utah Office

2

Backstage LIBRARY WORKS

Our Company, Bethlehem, PA Office

3

DIGITIZATION SERVICES	PRESERVATION MICROFILM	BIBLIOGRAPHIC SERVICES	AUTHORITY CONTROL	DATABASE SERVICES	ON-SITE SERVICES
Digitization	Microfilming	Cataloging	MARS Authority	Database Cleanup	RFID Tagging
Quality Assurance	Film Duplication	Reclassification	Control	ILS Data Migration	Reclassification
	Polysulfide Treatment	Retrospective Conversion	Manual Review	Marcadia for WorldCat	
	Microfilm Storage	Publishers ILS Data Migration	RDA Updates Planning Guide		

Backstage LIBRARY WORKS

Backstage Services

4

MARC

Over 16 Million Records Processed Annually

Backstage LIBRARY WORKS

Backstage Record Processing

5

Speed

Customize

Research

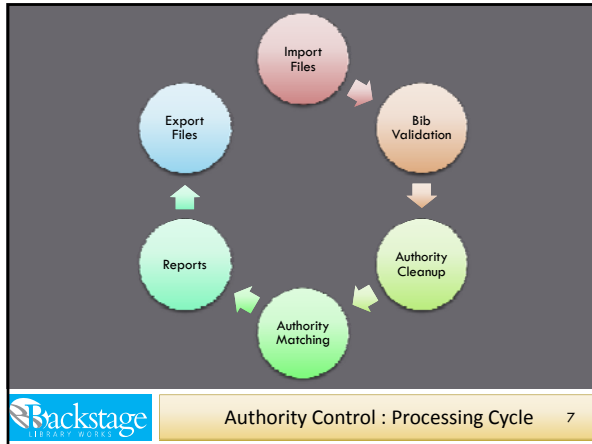
Consolidate

- Decrease waiting time for clients
- Increase programming flexibility
- Devote more time to system improvement
- Manage rules more effectively

Backstage LIBRARY WORKS

MARS 2.0 : System Rewrite

6



Records Processing Based On Client Profiles

<http://ac.bslw.com/mars/guide/#ac>

Backstage Processing : Planning Guide 8

PROFILE STEP 3.14

14 - Genre / Form Heading Matching (655 fields) - (check all desired)

- GSAFD
- AAT
- MeSH
- LC Genre
- Do not process - ignore completely

GENRE/FORM HEADING MATCHING

MARS 2.0 processing can match bibliographic form/genre headings tagged as 655 fields against a variety of authority files. MARC 655 fields are available for libraries to record the genre, form, and/or physical characteristics of the materials being described.

<http://ac.bslw.com/mars>

Backstage Processing : Online Profile 9

Custom: Harvard University DE NAME: SYS

Profile Rules Profile Lists

Processing Category: Bib Validation

Run	ID	Section
8		Planning Guide 2.0 Initial Article Validation - Other
9		Planning Guide 2.0 GMD - AACR2
10		Planning Guide 2.0 GMD - Common
11		Planning Guide 2.0 GMD - brackets
12		Planning Guide 2.0 GMD - no brackets
13		Planning Guide 2.0 GMD - sub h location
14		Legacy CHGTABLE
15		Legacy GENTABLE
16		Legacy DELTABLE
17		Legacy PCTABLE
18		Legacy MARS
19		Legacy ESC
20		Custom Processing

Rules For: Legacy CHGTABLE

Run	#	Tag	Ind1	Ind2	Subfield	Text	IF	THEN
1	655	655						
2	110	655	0	1				
3	275	655	0	1				
4	655	655	0	1				
5	110	655	0	1				
6	655	655	0	1				
7	655	655	0	1				
8	655	655	0	1				

Backstage Authority Cleanup : BARE Rules 10

Edit List Entries

ID: 1113

Description: 650/651 cartographic/map change

term	sub_v	tag_655	attributes
Bathymetric maps		04 v	
Comparative maps		04 v	
Index maps		04 v	
Manuscript maps		04 v	
Maps		04 v	
Maps for children		04 v	
Maps for people with visual disabilities		04 v	
Maps for the blind		04 v	
Maps, Comparative		04 v	
Maps, Manuscript		04 v	
Maps, Outline and base		04 v	
Maps, Physical		04 v	
Maps, Topical		04 v	

Rules that use this list:

Sect.	#	Tag	Ind1	Ind2	Subfield	ROA	Text	IF	THEN
20	3	650,651	04	v		all	1113		end_punct = ""
20	4	650,651	04	v		all	1113		end_punct = ""
20	5	650,651	04	v		all	1113		new_id = Rec:650/651, " ", F5:IND2; +

Backstage BARE List : Affected Rules 11

Edit Rule

Sections: Legacy CHGTABLE

Selector: Maps: 650

Indicator 1: n/a space 0 1 2 3 4 5 6 7 8 9

Indicator 2: n/a space 0 1 2 3 4 5 6 7 8 9

Subfield 1: not relevant any only Maps: only on non-EDA records run only on non-EDA records

Subfield values: or in list: 1003

IF: Test

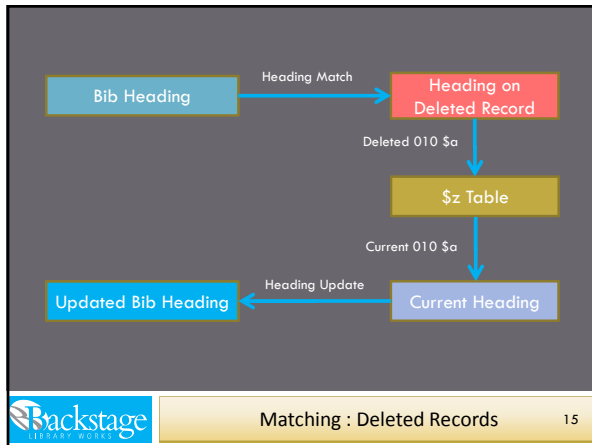
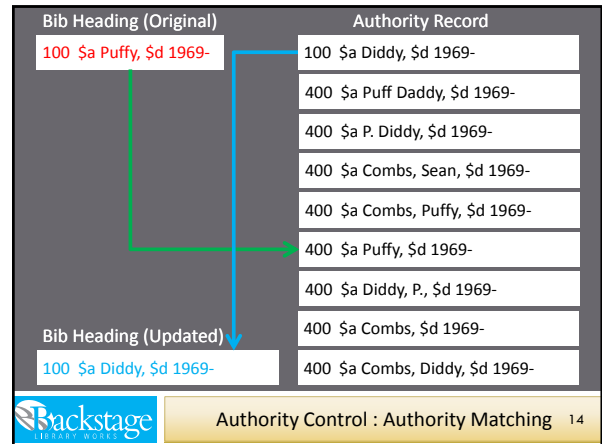
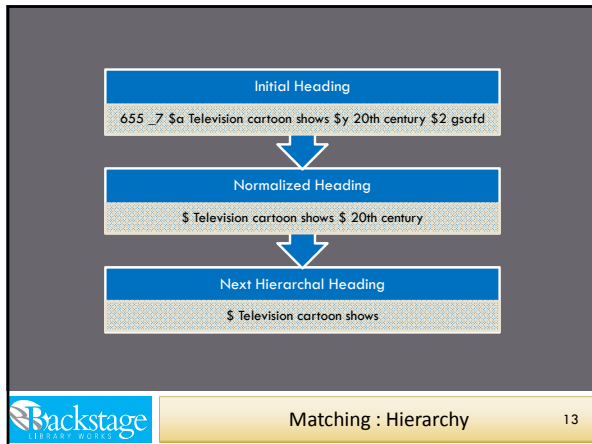
THEN: end_punct = ""
 right:all
 left:all
 end_punct = \$Sub:term:subfields(100,1)
 \$if end_punct == Match:replace,substs(Match:replace,le
 end_punct = ""

Links used by this rule: Subbed Lists Create new list...

Description: CHG 600 v to 2 Geo

term	replace	attributes
AFRICA	AFRICA	
AFRICA DE CARTEGANA COUNTY	Andes Region	
AGCN	Andes, South	
AGCNPROTECTORATE	Yemen, South	
AGCN SEA	Angren, Sea	
AFGHANISTAN	Algharistan	
AFGHANISTAN	Algharistan	
AFRICA EAST	Africa, East	
AFRICA BRITISH EAST	Africa, East	

Backstage Authority Cleanup : BARE Rules 12



```

Auxfile record
LDR 00317nam 22001331 4500
001 ovid47000040
005 20111202182207.0
010 $agf2011026155$zsh2009025010
040 $aUrOrBLW
155 $aComparative maps
455 $aMaps, Comparative

Corresponding LC record
010 __ $a gf2011026155 $z sh2009025010
035 __ $a (DLC)7757587
040 __ $a DLC $b eng $c DLC $f lcgft
155 __ $a Comparative maps
455 __ $a Comparative area maps
555 __ $w g $a Maps
670 __ $a LCSH, Jan. 8, 2009: $b (hdg.: Maps, Comparative)
675 __ $a Glossary of the mapping sciences, 1994.
    
```

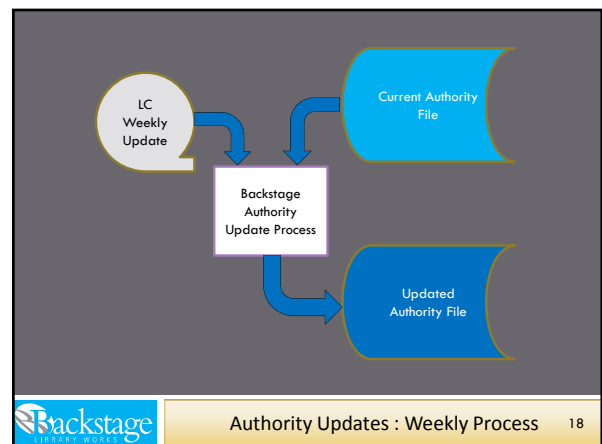
Backstage LIBRARY WORKS

Sample Auxfile Record

Abbrev	National Authority File	Updates	Size
NAF	Library of Congress Names	Weekly	8,212,000
SAF	Library of Congress Subjects	Weekly	8,611,000
CHILD	Children's and Young Adults' Cataloging Program	Weekly	1,000
LCGFT	Library of Congress Genre Form Terms	Weekly	800
MESH	National Library of Medicine	Annual	616,000
NLC-N	Library of Archives Canada Names	Semi-Annual	653,000
NLC-S	Library of Archives Canada Subjects	Monthly	659,000
AAT	Art & Architecture Thesaurus	Annual	35,000
RBMS	Rare Books and Manuscripts Section Vocabularies	Annual	1,600
TGM	Thesaurus for Graphic Materials	Frozen	7,900
GSAFD	Guidelines on Subject Access to Individual Works of Fiction, Drama, etc	Frozen	160

Backstage LIBRARY WORKS

National Authority Files : Counts 17



Handling LC Changes in Cartographic Subdivision Policy

<http://ar.bslw.com/community/blog/2010/10/lc-maps-policy-change/>

Backstage Cartographic Subdivisions : LC Policy 19

Subject subdivisions (\$v)
changed to general term "Maps"

More specific genre/form terms
put in 655 field.

<http://www.loc.gov/catdir/cpsocartographic.pdf>
<http://www.loc.gov/catdir/cpsocartographic3.pdf>

Backstage Cartographic Subdivisions : LC Changes 20

Current form subdivision	Proposed new form subdivision	Genre/form term
Maps, Comparative	Maps	Comparative maps
Maps, Manuscript	Maps	Manuscript maps
Maps, Outline and base	Maps	Outline maps
Maps, Physical	Maps	Physical maps
Maps, Pictorial	Maps	Pictorial maps
Maps, Topographic	Maps	Topographic maps
Maps, Tourist	Maps	Tourist maps
Maps for children	Maps	Children's maps
Maps for people with visual disabilities	Maps	Maps for people with visual disabilities
Maps for the blind	Maps	Maps for the blind
Relief models	Relief models	Relief models
Remote-sensing images	Remote-sensing images	Remote-sensing images
Remote-sensing maps	Maps	Remote-sensing maps

<http://www.loc.gov/catdir/cpsocartographic.pdf>

Backstage Changed Map Subdivisions : LC Table 21

File maintenance

Lack of qualification

Lack of support in ILS

Backstage Cartographic Changes : Issues 22

- 1 • Follow LC policy
- 2 • Change to "Maps" but don't add 655
- 3 • Add 655 but do not change \$v
- 4 • Other custom processing

Backstage Map Subdivision Processing : Options 23

Customer Profile
Customer: Arizona State University DB_NAME: AZS

Profile Rules **Profile Lists**

Processing Category: [B] Validation Note: to add categories, please have custom admin use MySQL Query Browser.

Run	ID	Section	Tag	Ind1	Ind2	Subfield	PQA	Text	SP
1	1000								
2	1001	Planning Guide 2.0 QMC w/ brackets							
3	1002	Planning Guide 2.0 QMC w/o brackets							
4	1003	Planning Guide 2.0 QMC sub h location							
15	1501	Legacy CHRTABLE							
16	1601	Legacy SHTABLE							
17	1701	Legacy DETABLE							
18	1801	Legacy PMS							
19	1901	Legacy ETC							
21	2101	Custom Processing - Pre							
22	2201	Legacy PMS Final							
23	2301	Character Conversion							

Rules List Custom Processing *green=customs Right-click on list below to view rule in a popup.*

Run	ID	Tag	Ind1	Ind2	Subfield	PQA	Text	SP
1	1000							
2	1001	110	1	1	1			
3	1002	110	1	1	1			
4	1003	110	1	1	1			
5	1004	110	1	1	1			
6	1005	110	1	1	1			
7	1006	110	1	1	1			
8	1007	110	1	1	1			
9	1008	110	1	1	1			
10	1009	110	1	1	1			
11	1010	110	1	1	1			
12	1011	110	1	1	1			
13	1012	110	1	1	1			
14	1013	110	1	1	1			
15	1014	110	1	1	1			
16	1015	110	1	1	1			
17	1016	110	1	1	1			
18	1017	110	1	1	1			
19	1018	110	1	1	1			
20	1019	110	1	1	1			
21	2101	655	1	1	1			
22	2201	655	1	1	1			
23	2301	655	1	1	1			
24	2401	655	1	1	1			
25	2501	655	1	1	1			
26	2601	655	1	1	1			
27	2701	655	1	1	1			
28	2801	655	1	1	1			
29	2901	655	1	1	1			
30	3001	655	1	1	1			
31	3101	655	1	1	1			
32	3201	655	1	1	1			
33	3301	655	1	1	1			
34	3401	655	1	1	1			
35	3501	655	1	1	1			
36	3601	655	1	1	1			
37	3701	655	1	1	1			
38	3801	655	1	1	1			
39	3901	655	1	1	1			
40	4001	655	1	1	1			
41	4101	655	1	1	1			
42	4201	655	1	1	1			
43	4301	655	1	1	1			
44	4401	655	1	1	1			
45	4501	655	1	1	1			
46	4601	655	1	1	1			
47	4701	655	1	1	1			
48	4801	655	1	1	1			
49	4901	655	1	1	1			
50	5001	655	1	1	1			

Backstage Map Subdivision Options : BARE Rules 24

Edit List Entries

ID: 1113 Note: to change description and column headings, close this window and press the [Edit desc] button on the Master List tab.
 Description: 650/651 cartograph:map change

term	sub_v	tag_655	attribute4
Bathymetric maps	Maps	Bathymetric maps	
Comparative maps	Maps	Comparative maps	
Index maps	Maps	Index maps	
Manuscript maps	Maps	Manuscript maps	
Maps	Maps	Maps	
Maps for children	Maps	Children's maps	
Maps for people with visual disabilities	Maps	Cartographic materials for people wit...	
Maps for the blind	Maps	Cartographic materials for people wit...	
Maps, Comparative	Maps	Comparative maps	
Maps, Manuscript	Maps	Manuscript maps	
Maps, Outline and base	Maps	Outline maps	
Maps, Physical	Maps	Physical maps	
Maps, Pictorial	Maps	Pictorial maps	

Rules that use this list:

Sect.	#	Tag	Ind	Ind:	Subli	ROA	Text	IF	THEN
20	3	650,651	v	04	v	all	1113		end_punc = " " & (lsm = Sub text search/)
20	4	650,651	v	04	v	all	1113		end_punc = " " & (lsm = Sub text search/)
20	5	650,651	v	04	v	all	1113		new_fid = Rec.addFID(655, " ", FID.END); *

Backstage LIBRARY WORKS Map Subdivisions Changes : BARE List 25

Option 1: \$v changed to "Maps" and appropriate 655 is added

650 _0 \$a Planning \$z Zambia \$v Maps, Topographic

\$v Term	\$v Replacement	655 Term
Maps, Physical	Maps	Physical maps
Maps, Topographic	Maps	Topographic maps
Maps, Tourist	Maps	Tourist maps

650 _0 \$a Planning \$z Zambia \$v Maps
 655 _0 \$a Topographic maps.

Backstage LIBRARY WORKS Map Subdivision : Option 1 26

Option 2: \$v changed to "Maps" but 655 is not added

650 _0 \$a Planning \$z Zambia \$v Maps, Topographic

\$v Term	\$v Replacement	655 Term
Maps, Physical	Maps	Physical maps
Maps, Topographic	Maps	Topographic maps
Maps, Tourist	Maps	Tourist maps

650 _0 \$a Planning \$z Zambia \$v Maps

Backstage LIBRARY WORKS Map Subdivision : Option 2 27

Option 3: appropriate 655 is added, \$v not changed

650 _0 \$a Planning \$z Zambia \$v Maps, Topographic

\$v Term	\$v Replacement	655 Term
Maps, Physical	Maps	Physical maps
Maps, Topographic	Maps	Topographic maps
Maps, Tourist	Maps	Tourist maps

650 _0 \$a Planning \$z Zambia \$v Maps, Topographic
 655 _0 \$a Topographic maps.

*custom programming option also available

Backstage LIBRARY WORKS Map Subdivision : Option 3 28

Backstage Processing For LCGFT and Genre / Form Terms

Backstage LIBRARY WORKS LCGFT : New Processing 29

- In 2010, LC decided to further identify genre auth records by recoding 155 subject records
- 155 records labeled sh were deleted and new records coded gf were created
- The development of LCGFT is ongoing

Backstage LIBRARY WORKS LCGFT : Summary 30

LCGFT records are included in the LC subject authority weekly updates

LCGFT records are identified by the prefix gf in the 010 field and 155 tag

- 010 \$a gf2011026697 \$z sh2009025020
- 155 \$a Topographic maps

Backstage LIBRARY WORKS

LCGFT Records : Format 31

Match 655 using both LCGFT and LCSH

- Matched heading updated if needed
- LCGFT auth records (tag 155)
- LCSH auth records (tag 150)
- Bib 655 fields could flip to 650

Backstage LIBRARY WORKS

Ideas : Initial Processing 32

Incomplete LCGFT File

- LCSH terms normally used in 650 fields are currently allowed in 655 fields
- MARS process currently changes the tag to match the auth tag

Backstage LIBRARY WORKS

Automated Matching : Issue 33

Tag Change Issue

- Returning an LCSH authority record with 150 for a term used in 655 field is problematic in some ILS systems

See http://www.loc.gov/catdir/cpsd/genre_form_faq.pdf Q#31

Backstage LIBRARY WORKS

Authority Records : Delivery Issue 34

- 1 • Ignore 655 fields
- 2 • Default matching (standard processing)
- 3 • Match other databases
- 4 • Custom (work with customer)

Backstage LIBRARY WORKS

Genre Heading Processing : Options 35

Condition	Action
655 2nd ind [blank, 0, 7]	Match against LCGFT
655 \$2 lcgft	Match against LCGFT
655 \$2 lcsch	Match against LCGFT
655 _0 \$a ... \$2 lcsch	Match against LCGFT

Backstage LIBRARY WORKS

Genre Heading Processing : Scenarios 36

Bib Heading (Original)
655_7 \$a By-laws. \$2 lcgft

Authority Record

010 \$a gf2011026104 \$z sh2010025081
155 \$a By-laws
455 \$a Bye-laws
455 \$a Bylaws

Bib Heading (Updated)
655_7 \$a By-laws. \$2 lcgft

Genre Heading Processing : Default Option 37

Bib Heading (Original)
655_0 \$a Television cartoon shows.

Authority Record

010 \$a gf2011026050 \$z 2007025314
155 \$a Animated television programs
455 \$a Cartoons (Television programs)
455 \$a Television cartoon shows
555 \$w g \$a Television programs

Bib Heading (Updated)
655_7 \$a Animated television programs. \$2 lcgft

Genre Heading Processing : Default Option 38

Bib Heading (Original)
655_7 \$a Television comedy programs \$2 gsaft

GSAFD Authority Record

001 GSAFD000024
155 \$a Comedy television programs
455 \$a Slapstick comedies
455 \$a Television comedy programs
555 \$w g \$a Comedies

Bib Heading (Updated)
655_7 \$a Comedy television programs. \$2 gsaft

Genre Heading Processing : Match Other Thesaurus 39

Bib Heading (Original)
655_7 \$a Comedy television programs. \$2gsafd

Authority Record

010 \$a gf2011026654 \$z 2007025368
155 \$a Television comedies
455 \$a Comedy programs, Television
455 \$a Comedy television programs
455 \$a Farces (Television programs)

Bib Heading (Updated)
655_7 \$a Television comedies. \$2 lcgft

Genre Heading Processing : Match Other Thesaurus 40

Bib Heading (Original)
655_0 \$a Fiction, Historical.

No match in LCGFT file

Authority Record

001 GSAFD000055
155 \$a Historical fiction
455 \$a Fiction, Historical
455 \$a Historical novels
455 \$a Historical romances

Bib Heading (Updated)
655_7 \$a Historical fiction. \$2 gsaft

Genre Heading Processing : Match Other Thesaurus 41

Genre Headings (655)

.b25956899	655	0	\$a Large type books.
.b25646497	655	0	\$a Love stories.
.b25645778	655	0	\$a Suspense fiction.
.b25668158	655	0	\$a Western stories.
.b25571862	655	7	\$aAction and adventure television programs.\$2gsafd
.b25148503	655	0	\$aAdventure comic books, strips, etc.
.b25173881	655	0	\$aAdventure fiction.\$2gsafd
.b25658074	655	0	\$aAdventure fiction.
.b25436144	655	0	\$aAdventure stories.\$2gsafd
.b25942839	655	0	\$aAdventure stories.\$2lcsh
.b24923904	655	0	\$aAdventure stories.
.b25694923	655	0	\$aAnime.
.b25248091	655	0	\$aAnthologies.
.b25847351	655	0	\$aAutobiographical fiction.
.b25672332	655	0	\$aBildungsromans.
.b25659510	655	0	\$aLove stories.

Unmatched Genre Report : Sample 42

Bib Heading (Original)
655_7 \$a Television cartoon shows \$y 20th century \$z gsafd

Authority Record

010 \$a gf2011026050 \$z sh2007025314
155 \$a Animated television programs
455 \$a Cartoons (Television programs)
455 \$a Television cartoon shows
555 \$w g \$a Television programs

Bib Heading (Updated)
655_7 \$a Animated television programs \$y 20th century. \$z lcgft

Genre Heading Processing : Partial Match Option 43

Genre Headings (655)

.b25942153	655	7	\$aAnimated television programs\$y2001-2010.\$zlcgft
.b2583602x	655	7	\$aChildren's television programs\$y2001-2010.\$zlcgft
.b25847727	655	7	\$aChildren's television programs\$y2001-2010.\$zlcgft
.b25698394	655	7	\$aDocumentary films\$y2001-2010.\$zlcgft
.b25924771	655	7	\$aFeature films\$y1981-1990.\$zlcgft
.b25924412	655	7	\$aFeature films\$y1991-2000.\$zlcgft
.b25687955	655	7	\$aFeature films\$y2006.\$zlcgft
.b25924771	655	7	\$aMade-for-TV movies\$y1971-1980.\$zlcgft
.b25924084	655	7	\$aScience fiction films\$y1981-1990.\$zlcgft
.b25658724	655	7	\$aWestern films\$y1941-1950.\$zlcgft

Partial Matched Report : Sample 44

Custom Processing Option

- Match 655 against LCSH without changing the tag
- Choose to have LCSH records delivered or not
- Development is ongoing

Genre Heading Processing : Custom Option 45

Bib Heading (Original)
655_0 \$a Annuals.

No match in LCGFT file

Authority Record

010 \$a sh 85003744
150 \$a Almanacs
450 \$a Almanacs
450 \$a Almanacs \$v Periodicals
450 \$a Annuals

Bib Heading (Updated)
655_0 \$a Almanacs.

Genre Heading Processing : LCSH Workaround 46

Automation and customized processes from Backstage Library Works lets **you be the star!**

★

Backstage : You Be The Star 47

Karen Anderson
Authorities Librarian
Backstage Library Works
kanderson@bslw.com
800.288.1265

www.bslw.com
ac.bslw.com/mars

Backstage : You Be The Star 48